

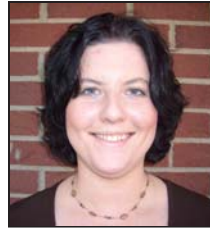
2008 Class of Leadership P.E.



Brian E. Aldridge, PE
Transportation Engineer
ENTRAN, PLC
11492 Bluegrass Pkwy, Ste 101
Louisville, KY 40299
Phone: (502)339-9663
Fax: (502)339-9664
Email: baldridge@entran.us
Profile: Manages roadway planning and Phase I design projects. Member of ACEC-KY, ITE and ASHE.



Yolanda Y. Allen, PE
Project Engineer
Louisville Water Company
550 South 3rd Street
Louisville, KY 40202
Phone: (502)569-3600 x2413
Fax: (502)569-0814
Email: yallen@lwcky.com
Profile: Responsible for performing design and construction management of plant and facilities capital projects. She is a member of NSPE/KSPE, the Society of Protective Coatings and DBIA.



Jamie L. Bengel, PE
Project Manager
HMB Professional Engineers
3 HMB Circle
Frankfort, KY 40601
Phone: (502)695-9800
Fax: (502)695-9810
Email: jbengel@hmbpe.com
Profile: Responsibilities include maintaining communication with clients, preparing preliminary and final designs of roadways. Member of NSPE/KSPE and ACEC-KY.



A. Bryce Fuller, PE
Project Engineer
Qk4
815 West Market Street, Suite 300
Louisville, KY 40202
Phone: (502)992-2923
Fax: (502)992-0605
Email: bfuller@qk4.com
Profile: Prepares and/or coordinates the preparation of engineering plans and calculations. Member of NSPE/KSPE, ACEC-KY, and APWA.



Corrie Macaulay, PE
Civil/Geotechnical Engineer
FRA Engineering, Inc.
359 South 4th Street
Danville, KY 40422
Phone: (859)236-5888
Fax: (859)236-5008
Email: cmacaulay@fraengineering.com
Profile: Oversees all geotechnical projects, construction inspection projects, preparation or reports. Member of NSPE/KSPE, ASCE and ACI.



Anthony E. Marconi, PE
Project Manager
URS Corporation
325 W. Main Street, Suite 1200
Louisville, KY 40202
Phone: (502)217-1512
Fax: (502)569-2304
Email: tony_marconi@urscorp.com
Profile: Lead technical engineer for Louisville Water Resources Department working on floodplain mapping projects. Member of NSPE/KSPE, ACEC-KY, KP-SAME, ASCE, KAMM.



Gregory S. Miller, PE
Project Engineer
Heritage Engineering LLC
603 North Shore Drive, Unit 204
Jeffersonville, IN 47130
Phone: (812)280-8201
Fax: (812)280-8281
Email: gmiller@heritageeng.com
Profile: Responsible for site development and hydraulic modeling both Open Channel and for Louisville MSD. Member of NSPE/KSPE and ASCE.



Elizabeth L. Bullock, PE
Project Manager
Third Rock Consultants, LLC
2514 Regency Road, Suite 104
Lexington, KY 40503
Phone: (859)977-2000
Fax: (859)977-2001
Email: ebullock@thirdrockconsultants.com
Profile: Performs stream assessments, prepares mitigation plans, determines permitting requirements with Corps of Engineers and Ky Div of Water. She is a member of NSPE/KSPE, ACEC-KY, Soil and Water Conservation Society, and American Society of Agricultural Engineers.



Lee J. Czor, PE
Engineering Manager
Sherman Dixie Concrete
759 Phillips Lane
Lexington, KY 40504
Phone: (859)381-6678
Fax: (615)354-6678
Email: lczor@shermamdixie.com
Profile: Responsible for coordination between production, sales and engineering for Kentucky and Ohio. Member of NSPE/KSPE, ASCE, KGEG and American Concrete Pipe Association.



Lee Anne Devine, PE
Chief, South Section,
Regulatory Branch
US Army Corps of Engineers
PO Box 59
Louisville, KY 40201-0059
Phone: (502)315-6692
Fax: (502)315-6677
Email: LeeAnne.Devine@rl02.usace.armymil
Profile: Manages the workload in her section and seeing that the decisions made regarding projects are in accordance with the law. Member of KP-SAME.



Bradley S. Eldridge, PE, LSIT
Transportation Engineer
Specialist
Kentucky Transportation Cabinet
200 Mero Street
Frankfort, KY 40622
Phone: (502)564-3280
Fax: (502)564-3324
Email: Brad.Eldridge@ky.gov
Profile: Helps District Offices follow guidelines, develops new policies and tracks, coordinates and facilitates the development of highway construction plans. Member of NSPE/KSPE and KATE.



E. Ray Rush, PE, GISP
Information Solutions Manager
Fuller, Mossbarger, Scott & May Engineers
1901 Nelson Miller Parkway
Louisville, KY 40223
Phone: (502)212-5000
Fax: (502)212-5055
Email: rrush@fmsm.com
Profile: Leads the software development team at FMSM to ensure quality information solutions are delivered to clients. Member of NSPE/KSPE, ACEC-KY and ASCE.



Mark David Sanders, PE
Project Manager
Summit Engineering, Inc.
131 Summit Drive
Pikeville, KY 41501
Phone: (606)432-1447 x311
Fax: (606)432-1440
Email: mdsanders@summit-engr.com
Profile: Responsible for design of surface mine operations, mineral reserve studies, mine reclamation projects, railroad design and layout, refuse fill design, etc. Member of NSPE/KSPE and ACEC-KY.



Wesley C. Sydnor, PE
Senior Project Engineer
O'Brien & Gere
730 W. Main St., Suite 200
Louisville, KY 40220
Phone: (502)587-7884
Fax: (502)587-7895
Email: sydnorwc@obg.com
Profile: Manages capital projects including development of scope schedule and budgets. Member of NSPE/KSPE, APWA, Natural Solutions Group and KY/TN Collection Systems Committee.



Robert H. Williams, PE
Contract Administration Section
Manager
HDR/Quest, Inc.
2517 Sir Barton Way
Lexington, KY 40509
Phone: (859)223-3755
Fax: (859)219-0745
Email: robh.williams@hdrinc.com
Profile: Assists with feasibility studies, constructability reviews, cost estimates, and quality control reviews of projects. Member of NSPE/KSPE, ACEC-KY and ASCE.